



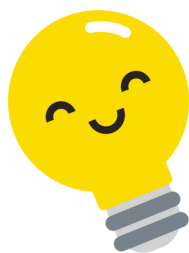
## Discover Leicestershire Challenge

It has been amazing to see so many units completing this challenge, don't forget that the challenge is running until July so there is still plenty of time to complete this.

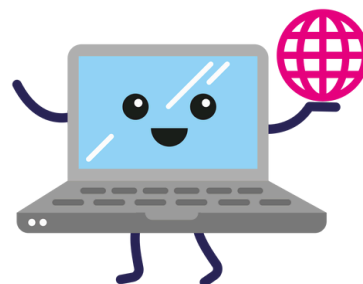
If you are planning to complete the challenge please put in your badge order form as soon as possible.

The challenge pack and badge order form can be found here [bit.ly/3PW6kbq](https://bit.ly/3PW6kbq)

## Young Leader Conference



**Saturday 8 March 2025**  
**10am to 3.30pm**  
**St Martin's Conference Centre**  
**Leicester**  
**LE1 5PZ**



**Cost: £5**  
**Which will include a lunch voucher**

**Peer education information**

**Crafts, games & activities**

**Young leader development programme workshops**

**Details of future opportunities**

**Bookings now open**

**[bit.ly/3POFQs1](https://bit.ly/3POFQs1)**



**SAVE THE DATE**

## Something exciting is coming.....

Details will be released soon but for now please save the dates of Saturday 16 August and Sunday 17 August 2025 for an exciting activity day for all sections.

# We need help!

Could you spare some time over Saturday 15 to Sunday 16 March 2025?

Rainbows across the county will be taking part in the first Big Spring Sleepover. Can you help with



Activities

Catering

First Aid/Welfare

Admin

Booking form for staff can be found here or for further information please [spring@leicestershireguides.org](mailto:spring@leicestershireguides.org)



**Saturday 15 March 2025  
to Sunday 16 March 2025**

JUDGEMEADOW COMMUNITY  
COLLEGE  
MARYDENE DRIVE, EVINGTON  
LE5 6HP

## Guiding Essentials

Our Guiding Essentials store will be opening normal shop hours during February half term.

Thank you to all of those units that shared our previous newsletter with parents.

[equipstore@leicestershireguides.org](mailto:equipstore@leicestershireguides.org)

### Shop opening times

**Monday - 10am - 1pm**

**Tuesday & Wednesday - Closed**

**Thursday - 3pm - 6pm**

**Friday - 10am - 1pm**

**Saturday - 10am - 1pm**

## Subscription 2025 dates

Trial invoices are now live, please could units, districts and divisions ensure that these are checked and any changes made as soon as possible. If you are struggling to view your invoice then please let your local commissioner know.

- **Monday 17 February 2025, 7pm:** No more changes can be made to trial invoices.
- **Tuesday 18 February 2025, from 12pm:** Official and final payable invoices will be available to download and pay by card or by cheque. An email with details will be sent.
- **Friday 14 March 2025:** A reminder email to the main contact of any level that hasn't yet paid their official invoice will be sent.
- **Friday 28 March 2025, midday:** All subscription payments must be received in full by this date.

If you are struggling to pay your annual subscription, please talk to your local commissioner as soon as possible.

## Want to share some photos of what your unit has been up to?

We always love shouting about how great Girlguiding Leicestershire is on social media, but what makes us really great is the girls in the units. We would love to share photos of units taking part in activities, camps or sleepovers or even the amazing things young members are achieving. Please send any photos to **[socialmedia@leicestershireguides.org](mailto:socialmedia@leicestershireguides.org)** please include your unit name and ensure that you have the correct photo permissions to share on social media.



**Come and join the young leader  
meeting on TEAMS**

**Thursday 13 February 7pm**

**Share a Mother's Day Craft**

**[Email heather@leicestershireguides.org to  
book a place](mailto:heather@leicestershireguides.org)**



# Guides (year 9+) Rangers, Young Leaders

---



Would you like to find out more about

## Duke of Edinburgh's Award

and how you can achieve this through  
Girlguiding?

---

### DofE Information Zoom calls:

- Tuesday 11 February at 8pm
- Thursday 13 February at 7pm

PARENTS  
& LEADERS  
WELCOME

email: [leicsdofe@gmail.com](mailto:leicsdofe@gmail.com) for the Zoom link