

A message from our County Commissioner

Welcome to our March newsletter.

I am delighted to announce that the next county commissioner for Girlguiding Leicestershire will be Janet Gelsthorpe, Janet will commence her role 1 July 2025.

Please congratulate Janet when you see her and wish her well in her new role, I know she will enjoy the position and continue to take Girlguiding Leicestershire forward.

We would like to invite you all to Topstones on Sunday 6 July 2025 when we will be welcoming Janet and her team and I will be saying goodbye to my role.

Further information for the event on 6 July and booking details will be out soon.



Last month we gave a 'save the date' for something exciting happening on Saturday 16 to Sunday 17 August at Topstones.

We are excited to announce that planning for

Survive 25

is well underway. This day event will be for all sections.

We are hoping for activities such as



Barefoot walking

Big art

Bushcraft

Kites

Yoga

High adrenaline activities

STEM

along with all the usual Topstones activities all with a survival twist.

More information and booking details out soon.



Subscription 2025 dates

Invoices are now live, please could units, districts and divisions ensure that these are paid by **midday on Friday 28 March 2025**

All subscription payments must be received in full by this date.



**A HUGE THANK YOU
TO
GIRLGUIDING LEICESTERSHIRE**



At the Leicestershire County Training day in March 2023, we launched the Aquabox Challenge and Badge. Your support has been, and still is outstanding, in working together to save lives.

In just two years Aquabox Challenge has spread to Guides and Scouts not only in the UK but slowly around the world.

We have visited over 200 hundred local groups, camps and other events and we estimate we have spoken to personally, over 14,000 people. The interest shown has been fantastic.

Girlguiding Leicestershire has helped us raise along with Rotary, Scouts, Churches and other groups an incredible £11,870.35 so far, by **Working Together To Save Lives**. So a huge thank you, as none of these donations would have been possible, without **Girlguiding Leicestershire's** initial support.

In January 2025 we launched two additional Aquabox Challenges

AQUABOX AQUABLUE

AQUABOX AQUASILVER

AQUABOX AQUAGOLD

Have a look at the following leaflet for more information.

Sylvia & Ray Spare Aquabox Ambassadors raynsylv@gmail.com

For more information on Aquabox please visit our county website here

What is the Aquabox Challenge and Badge?

Two wonderful Aquabox ambassadors Ray, from Rotary district 1070 and Sylvia, a Division Guide Leader, set up the Aquabox Challenge.

The challenge is to raise awareness of the amazing humanitarian aid work that Aquabox does to save lives around the world in times of crisis.

Designed to be fun and simple, the challenge is an adaptable way to inform youth about Aquabox. The Challenge is for individuals and groups of all ages, and is ideal for Scouting, Girlguiding and Schools.

There are three levels to the challenge;



AQUABLUE: Is the base challenge where participants learn all about Aquabox and donate for their badges. This donation supports the purchase of a Water Filter.



AQUASILVER: Take Aquabox into your local community to fundraise for a Community Filter. Badges are given to participants and the unit is awarded a certificate.



AQUAGOLD: Fundraise with an International Theme for an AQUABOX to be sent anywhere in the world. This challenge is hardest, and will be a real personal achievement to gain it. Each participant will receive a badge and their own personal certificate.



Make a difference

There are lots of ways to support the Aquabox Challenge! You don't have to stick to one approach, you can combine different types of fundraising activities to achieve your goal.

To find out more, visit the Aquabox Challenge webpage: www.aquabox.org/what-we-do/aquabox-challenge or simply scan the QR code on the front of this leaflet to go directly to the site, and fill out the 'Find Out More' form.

Once completed, we'll email you the Aquabox Challenge Pack - completely free! The pack contains all the information you need to get started:

- How to Complete the Challenge:** Step-by-step guidance and instructions for ordering badges.
- Fun Activities and Games:** Engaging ideas to make fundraising enjoyable.
- Aquabox Presentation:** Learn more about Aquabox's mission to provide 'clean water in a crisis'.

Thank you for your support

Aquabox is a volunteer-led charity and community project set up by the Rotary Club of Wirksworth. Registered Charity No: 098409.



aquabox.org
A ROTARY PARTNER CHARITY



Aquabox
CLEAN WATER IN A CRISIS

Aquabox Challenge

Fun, simple and suitable for all ages from 4-100 years! Get involved and raise money to support Aquabox.



Working Together To Save Lives



aquabox.org
Tel: 01629 825178

Scan me to discover the challenge

Who we are

Aquabox is a charitable organisation dedicated to ensuring access to safe drinking water.

Through our cutting-edge filtration units, we offer an innovative solution that delivers clean and safe drinking water instantly, eliminating chemical additives.



Aquabox is a vibrant community project with over 70 volunteers, who come to our depot each week.

Our volunteers manufacture, assemble, test and pack the family filters. We also have teams of packers for the Aqua-Aid boxes.



What we do

Both the Aquabox filters are based on sub-micron filter membranes which are impenetrable to bacteria and most viruses, like typhoid, cholera, and dysentery. The filters instantly produce safe, clean water for drinking, cooking and for washing. With a quick, simple daily back-flush process to get rid of accumulated contamination, they go on working - day after day, month after month, year after year.

Aquabox water filters, and Aqua-Aid boxes, have been distributed around the world to countries suffering from natural and man-made disasters, providing safe drinking water to hundreds of thousands of people.

What we send

Water Filters



Aquabox Family Filter

£35

Aquabox Community Filter

£250

We provide two solutions, depending on the need. The Aquabox Family Filter, capable of filtering one litre of water per minute, and the Aquabox Community Filter - which can filter six litres per minute, and is designed for schools, clinics and community centres.

Aqua-Aid Humanitarian box

£150



An Aqua-Aid box contains:

- Family water filter
- Shelter materials and tools
- Cooking utensils
- Personal hygiene items
- Educational items and toys

Aqua12s Box - 12 Family Filters in a box

£450



The amounts shown indicate the cost to Aquabox of each product we send out.



Guiding Essentials

Our Guiding Essentials store will close for the Easter holidays after business on Friday 11 April and reopen at 10am on Monday 28 April.

Shop opening times

Monday - 10am - 1pm

Tuesday & Wednesday - Closed

Thursday - 3pm - 6pm

Friday - 10am - 1pm

Saturday - 10am - 1pm

If you are unable to visit us during our opening times, don't forget we are happy to accept orders via email for posting or collection during office opening hours. When emailing please give your name, unit, telephone number, address for postage/or collection details and a list of the items you wish to order. An invoice will be included with your order for payment within 28 days.

equipstore@leicestershireguides.org



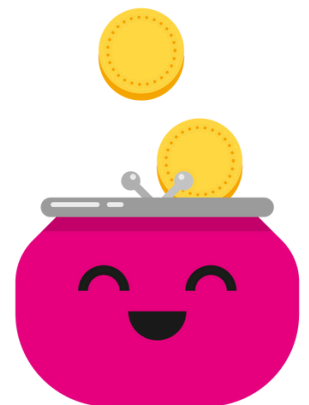
**Did you know about the extra things our
Girlguiding Leicestershire Equipment store
can provide?**

Holding a large division event?

Why not request a 'pop up' shop.

Our volunteers are able to attend division events with a variety of Girlguiding merchandise from a range of prices. To discuss availability and requirements please email equipstore@leicestershireguides.org

Please give as much notice as possible.



Upcoming trainings

Wed
26
March
7pm - 9pm



1st Response Module 2

Virtual

Wed
2
April
7pm - 9pm



1st Response Module 1

Christchurch Methodist Church, Shepshed

Wed
9
April
7pm - 9pm



1st Response Module 3

Virtual

Sun
27
April
9.30am - 2.30pm



Safer Guiding

Girlguiding Leicestershire County Office

Tues
6
May
7pm - 9pm



1st Response Module 2

Virtual

Tues
13
May
7pm - 9pm



1st Response Module 3

Virtual

Fri
23
May
7pm - 9pm



1st Response Module 1

St John's Community Centre, Enderby

All of our courses and events can be found on the
County website bit.ly/41n1lHI

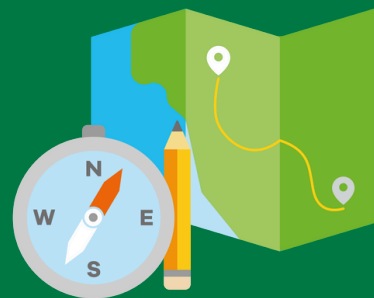


**Come and join the young leader
meeting on TEAMS**

Wednesday 23 April at 7pm

Be prepared –

Going out and about with your unit



**Email heather@leicestershireguides.org
to book a place**



We'll also be making
s'mores over tea lights



Working Weekend and Spring Clean

Saturday 26 April 9am to 5pm

Sunday 27 April 9am to 3pm

Can you spare a few hours to help us with some of the decorating, spring cleaning and outdoor jobs at Topstones?

No particular skills required, just a bit of energy and a smile!

If you would like to make a weekend of it, the pods are available, or you could pitch a tent. We will provide a meal and 'entertainment' on the Saturday evening and breakfast and lunch on Sunday, but we ask that you bring a packed lunch for Saturday.

As there are no children on site you may like to bring a 'drink' for Saturday evening.

In order to prepare enough jobs and food, please complete visit the event page on the county website, complete the form and return to

Sally.illsley11@outlook.com

Please include friends, partners and time you/they are available e.g 9.30am -4.00pm

